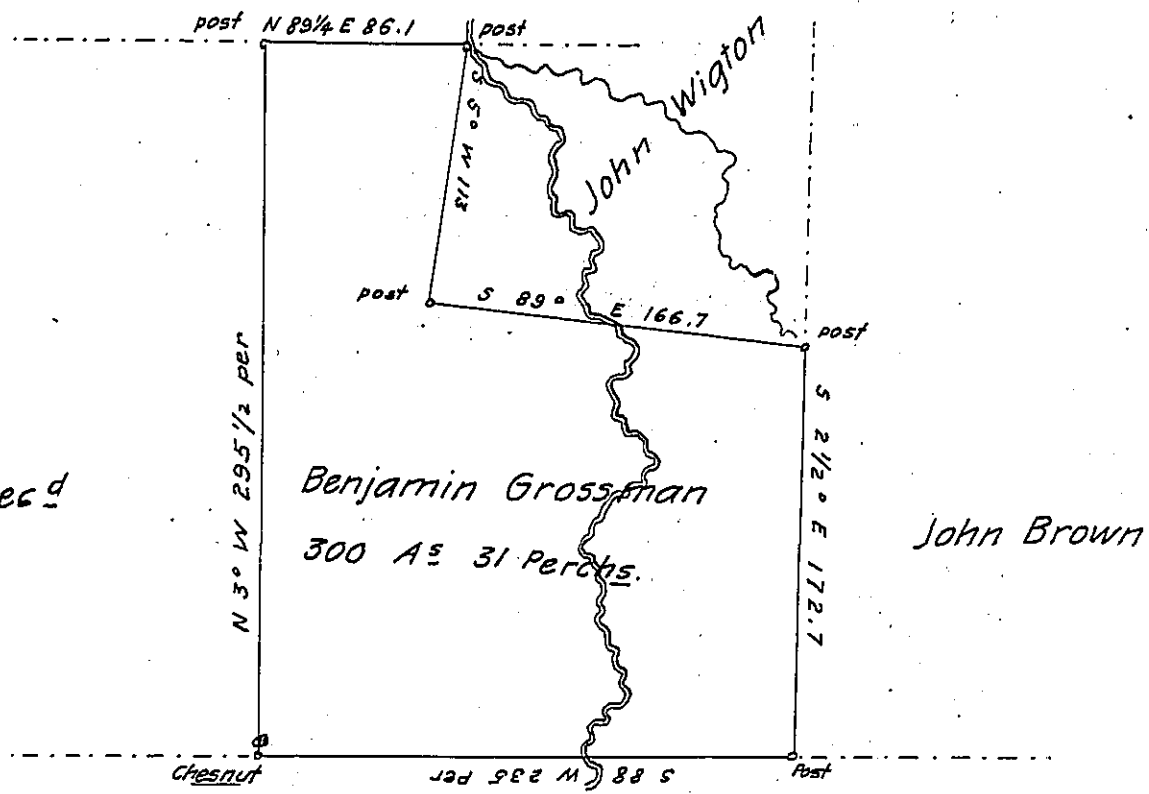


2^d Donation District

Heirs of
James Campbell Dec^d



1st Donation District

Draft of a tract of land situated in Slippery rock Township
Butler County on the waters of Slippery rock creek Containing three hund-
red acres & thirty one perches and the allowance &

Surveyed December the 7th A.D. 1837 at the instence of Benjamin
Grossman. By virtue of the settlement and improvement of Alex. Arwin dec^d

T. H. Lyon D.S.

I do certify the above to be a true copy of a survey found
in the Entry Book of T. H. Lyon, former Deputy Surveyor of Butler County.
Given under my hand and seal this 6th day of December A.D. 1841

James Durlap

To Jacob Sallade Esq^r S.G.

D. S. B. Co^y

Commonwealth Pennsylvania

IN TESTIMONY that the above is a copy of the original remaining on file in
the Department of Internal Affairs of Pennsylvania, made
conformably to an Act of Assembly approved the 16th day of
February, 1833, I have hereunto set my Hand and caused
the Seal of said Department to be affixed at Harrisburg,
this first day of February 1905

George P. Pearson
Secretary of Internal Affairs